



# Solid Surface Oven

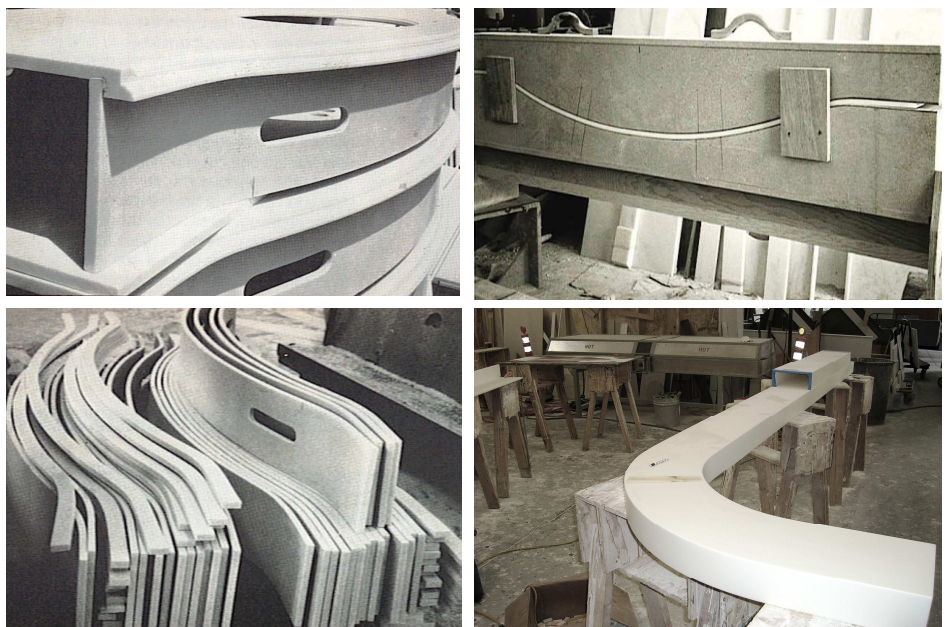
*Schultz Forming Products* presents our Solid Surface Oven which has been carefully designed to heat solid surface materials quickly, uniformly and affordably.

## Features:

- Opens Like A Clam Shell For Easy Access
- Non Marking Grill
- Employs Infrared And Convection Heat For A Fast Penetrating Time
- Welded Steel Frame
- Clear Viewing Window
- Easy To Use And Built To Last!



Many Shapes Can Be Easily Formed With Solid Surface Materials



Schultz Forming Products LLC  
2796 Loker Ave., West, 105  
Carlsbad CA 92010

USA/CAN 1-800-822-2875  
INT 00-1-928-345-8717

[www.schultzform.com](http://www.schultzform.com)  
Email: [info@schultzform.com](mailto:info@schultzform.com)

## Sizes and Specifications:

### Our Standard Ovens

**Model SSO12**, Heating Area 34" X 150"  
208~240 volt, 3 phase, 35 amps.  
(This the most popular as it can handle a full sheet).

**Model SSO8**, Heating Area 34" X 100"  
208~240 volt, 1 phase, 45 amps.

**Model SSO612**, Heating Area 7" X 150"  
208~240 volt, 1 phase, 20 amps.  
(This is a bench top Model ideal if you are just doing strips one at a time).

**Model SSOPAN**, Heating Area 72" X 100"  
208~240 volt, 3 phase, 50 amps.  
(This Model is for forming shower pans).

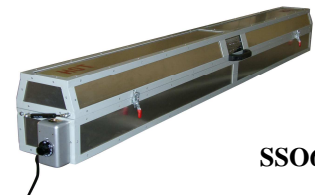
Custom Sizes are Available and often made.



SSO12



SSOPAN



SSO612

The Oven uses a combination of infrared and convection technology to rapidly soak through your Solid Surface material without over heating it... Much faster than a conventional Oven . The hood of the oven has been designed for easy access and a view window is conveniently located in the front of the oven for checking materials or pointing a laser thermometer though. The legs of the Solid Surface Oven are removable for easy transportation and storage of the unit when not in use.



SSVF12 and SSO12

Many shapes can be easily formed with solid surface materials. Some brands will form easier than others and the correct bending temperatures may vary so the Ovens are easily adjustable.

Most materials of varying thickness will form in any direction and into many shapes. The ability to form solid surface materials opens many new horizons.

We manufacture and stock standard sizes however custom sizes are available as well. Please see our website at [www.schultzform.com](http://www.schultzform.com). We also manufacture vacuum forming equipment which can be used in conjunction with the solid surface oven. Call for details.